

Infection Prevention Solutions

**Providing the
proven protection
that you deserve.**

About us

Bodyguard produces reliable, innovative infection prevention solutions and equipment for the healthcare industry, offering unparalleled protection for both staff and patients.

Our product portfolio is one of the largest on the market, including technologically advanced coverings used during surgical procedures, respiratory protection and other solutions that inhibit the spread of disease.

Using scientifically proven technology and clinically-tested designs, we are able to provide comfortable, effective 360° protection products made to the highest standards. In addition, it is our aim to offer affordable items without sacrificing safety. We understand the challenges of our customer base and we are constantly moving towards increased effectiveness at lower costs.

World Class Manufacturing

An invaluable knowledge base, pioneering practices and exceptional production facilities are central to our business.



Focused on Safety

Bodyguard healthcare solutions are designed for your protection and the safety of patients, manufactured with industry-leading elements that ensure comfort.

Global Compliance

Bodyguard products meet the most stringent industry standards, ensuring that we are always ready to serve the international market.



Excellence in Logistics

Our logistical expertise allows us to provide quick and easy access to products, at the desired capacity.

Infection Prevention Guide

Bodyguard provides head-to-toe protection garments complemented by a variety of infection control products. Used by medical staff and patients, these items reduce the spread of diseases in examination areas, labs, operating rooms and beyond. Our comprehensive range includes facial protection solutions, gowns, coveralls, lab coats, aprons, scrub suits, headwear, footwear, sleeve covers and hand disinfectants.



BODYGUARD

- 1. Face Masks
- 2. Respirators
- 3. Hand Disinfectants
- 4. Scrub Suits
- 5. Gowns
- 6. Eye Protection

Proven Effectiveness



Global confidence in Bodygard products is proven by a large consumer base, spanning 3 continents and 23 countries.

A Guide to Healthcare Guidelines and Regulatory Compliance

EUROPEAN DIRECTIVES TO CLASSIFY PROTECTIVE APPAREL



This brochure catalogues products classified by the European regulatory body as follows:

- PPE Category I - Minimum Protection according to Regulation EU 2016/425
- PPE Category III – Protection against potentially fatal hazards according to Regulation EU 2016/425
- MDD Class I - Non-sterile Protection according to Directive 93/42/EEC

Please consult each product’s relevant Technical Data Sheet for full details of an item’s classification.

Directive 93/42/EEC
This standard applies to medical devices and their accompanying accessories, this includes:

- Medical instruments or appliances used alone or in combination
- Software intended for diagnostic and/or therapeutic medical purposes
- Any related materials and articles

Regulation EU 2016/425
This standard applies to Personal Protective Equipment (PPE), as follows:

- The movement of PPE within the European Community Market
- The safety requirements that PPE should meet

ISOLATION GOWNS INTENDED FOR USE IN HEALTHCARE FACILITIES



Medical staff use protective equipment to safeguard themselves, patients and visitors. Isolation gowns prevent the transfer of microorganisms, blood, other bodily fluids, potentially infectious materials and additional contaminants of all kinds.

These gowns are designed to provide 360° protection, covering the healthcare worker’s front, arms, sides and the back of the body down to the knees, as a minimum.

The ASTM F23.40 Biological Subcommittee work group has determined the below with regard to isolation gowns:

- Any potential use and wear issues
- Isolation gown performance standards
- Compliance and potential problems

Isolation Gowns

BACK STYLE OPTIONS



Open-back

Overlapping
Full-back Panels

Full-back

WRIST STYLE OPTIONS



Elastic wrist

Elastic thumb loop

Thumb loop

Knitted cuff

NECK STYLE OPTIONS



Sticky tab

Tie neck

Hook and loop

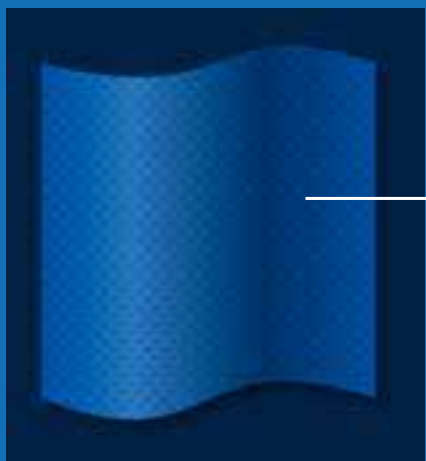
Over-the-head

World Class Materials

Choosing fabrication that is fit for purpose is extremely important. The below guide outlines the features and benefits of the primary materials available at Bodygard

SPUNBOND POLYPROPYLENE

A cost-effective and comfortable fabric. Its non-woven construction is achieved by bonding fibres to form a single, breathable material. It is only appropriate for environments with minimal risk of fluid exposure.

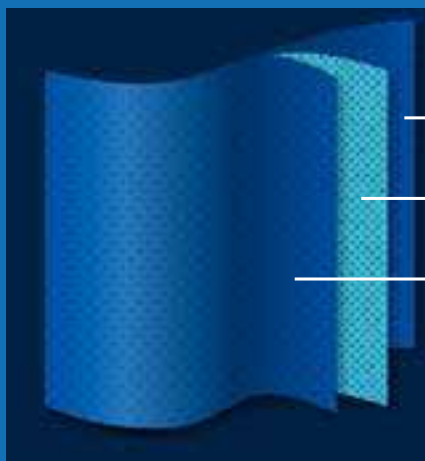


SPUNBOUND



MULTI-LAYER SMS MATERIAL

This fabric provides an excellent combination of protection and comfort. It consists of internal layers of melt-blown polypropylene between outer layers of Spunbond polypropylene. It is breathable while maintaining strong fluid-resistance.

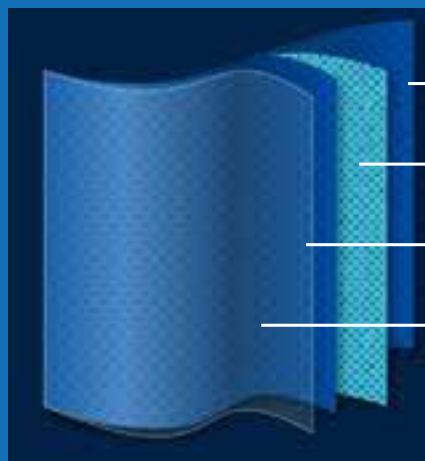


SPUNBOUND
MELTBLOWN
SPUNBOUND



IMPERVIOUS FILM LAMINATE

This fabric is available in a heavy weight option and is an excellent choice for environments requiring a high level of fluid protection. It is formed by coating multi-layer SMS with a layer of impervious polyethylene.



SPUNBOUND
MELTBLOWN
SPUNBOUND
POLY FILM



POLYETHYLENE (PLASTIC) FILM

Created from a single layer of polyethylene film, this fabric is ideal for environments requiring impervious protection. It offers an excellent barrier while being cost-effective.

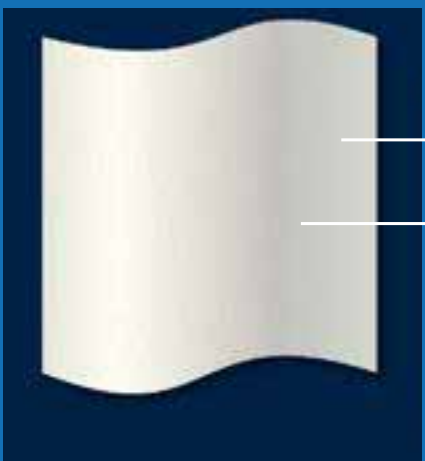


POLY FILM



MICROPOROUS LAMINATE

This breathable fabric is created by bonding microporous film to non-woven materials. It offers fluid-proof protection that is ideal for extended wear in environments where liquids are present.



SPUNBOUND
MICROPOROUS FILM





Protective Apparel

ISOLATION GOWN AAMI 1

These gowns are made from polypropylene nonwoven material that provides comfort and durability. Ideal for demanding environments:

- Lightweight multi-layer SMS fabric
- Breathable and comfortable
- Side ties on waist
- Knitted cuffs or elastic band
- Hook and loop or sticky tab on neck
- Full back for complete protection
- Single-use
- **Model No: 8080**

ITEM NO.	SIZE	COLOR	PACKAGING
Hook and loop neck, knitted cuffs, flat pack			
8080V1TE1LG	L	Blue	10/bag, 110/case
8080V1TE1XL	XL	Blue	10/bag, 110/case
8080V1TE12X	XXL	Blue	10/bag, 110/case
8080V1TE3LG	L	Yellow	10/bag, 110/case
8080V1TE3LG	XL	Yellow	10/bag, 110/case
8080V1TE3LG	XXL	Yellow	10/bag, 110/case
Sticky tap neck, elastic band, flat pack			
8080V2TE1LG	L	Blue	10/bag, 110/case
8080V2TE1XL	XL	Blue	10/bag, 110/case
8080V2TE12X	XXL	Blue	10/bag, 110/case
8080V2TE3LG	L	Yellow	10/bag, 110/case
8080V2TE3XL	XL	Yellow	10/bag, 110/case
8080V2TE32X	XXL	Yellow	10/bag, 110/case

AAMI LEVEL
1

wrist style options:



or



neck style options:



or



ISOLATION GOWN AAMI 2

These mid-weight gowns are made from breathable SMS material that provides a medium level of fluid protection:

- Medium-weight multi-layer SMS fabric
- Strong and durable
- Side ties on waist
- Knitted cuffs or elastic band
- Hook and loop or sticky tab on neck
- Full back for complete protection
- Single-use
- **Model No: 8100**

ITEM NO.	SIZE	COLOR	PACKAGING
Hook and loop neck, knited cuffs, flat pack			
8100V1TE1LG	L	Blue	10/bag, 110/case
8100V1TE1XL	XL	Blue	10/bag, 110/case
8100V1TE12X	XXL	Blue	10/bag, 110/case
8100V1TE3LG	L	Yellow	10/bag, 110/case
8100V1TE3LG	XL	Yellow	10/bag, 110/case
8100V1TE3LG	XXL	Yellow	10/bag, 110/case
Sticky tap neck, elastic band, flat pack			
8100V2TE1LG	L	Blue	10/bag, 110/case
8100V2TE1XL	XL	Blue	10/bag, 110/case
8100V2TE12X	XXL	Blue	10/bag, 110/case
8100V2TE3LG	L	Yellow	10/bag, 110/case
8100V2TE3XL	XL	Yellow	10/bag, 110/case
8100V2TE32X	XXL	Yellow	10/bag, 110/case

wrist style options:



or



AAMI LEVEL
2



neck style options:



or



ISOLATION GOWN AAMI 3

These gowns are made from strong polyethylene-coated nonwoven material that provides comfort and durability. Ideal for demanding environments:

- Protective multi-layer polyethylene-coated nonwoven fabric
- Strong and durable
- Side ties on waist
- Knitted cuffs or elastic band
- Hook and loop or sticky tab on neck
- Full back for complete protection
- Single-use
- **Model No: 8110**

ITEM NO.	SIZE	COLOR	PACKAGING
Hook and loop neck, knited cuffs, flat pack			
8110V1TE1LG	L	Blue	10/bag, 100/case
8110V1TE1XL	XL	Blue	10/bag, 100/case
8110V1TE12X	XXL	Blue	10/bag, 100/case
8110V1TE2LG	L	White	10/bag, 100/case
8110V1TE2LG	XL	White	10/bag, 100/case
8110V1TE2LG	XXL	White	10/bag, 100/case
Sticky tap neck, elastic band, flat pack			
8110V2TE1LG	L	Blue	10/bag, 100/case
8110V2TE1XL	XL	Blue	10/bag, 100/case
8110V2TE12X	XXL	Blue	10/bag, 100/case
8110V2TE2LG	L	White	10/bag, 100/case
8110V2TE2XL	XL	White	10/bag, 100/case
8110V2TE22X	XXL	White	10/bag, 100/case

wrist style options:



or



AAMI LEVEL
3



neck style options:



or



POLY-REINFORCED ISOLATION GOWN

These gowns provide excellent protection in environments with high levels of fluid:

- AAMI Level 3 isolation gown with ongoing 510(k) clearance**
- Polyethylene-coated multi-layer SMS throughout - front, back and top to bottom
 - High fluid-resistance
 - Side ties on waist
 - Knitted cuffs, elastic band or elastic thumb loop cuffs
 - Hook and loop, sticky tab or ties on neck
 - Full back for complete protection
 - Single-use
 - **Model No: 8120**

ITEM NO.	SIZE	COLOR	PACKAGING
Hook and loop neck, knitted cuffs, flat pack			
FLS 10401	L	Blue	10/bag, 100/case
FLS 10402	XL	Blue	10/bag, 100/case
FLS 10403	XXL	Blue	10/bag, 100/case
Hook and loop neck, elastic band, flat pack			
FLS 10411	L	Blue	10/bag, 100/case
FLS 10412	XL	Blue	10/bag, 100/case
FLS 10413	XXL	Blue	10/bag, 100/case
Neck ties, knitted cuffs, flat pack			
FLS 10431	L	Blue	10/bag, 100/case
FLS 10432	XL	Blue	10/bag, 100/case
FLS 10433	XXL	Blue	10/bag, 100/case
Sticky tab neck, elastic band, flat pack			
FLS 10451	L	Blue	10/bag, 100/case
FLS 10452	XL	Blue	10/bag, 100/case
FLS 10453	XXL	Blue	10/bag, 100/case
Sticky tab neck, elastic thumb loop, flat pack			
FLS 10461	L	Blue	10/bag, 100/case
FLS 10462	XL	Blue	10/bag, 100/case
FLS 10463	XXL	Blue	10/bag, 100/case

wrist style options:



or



or



AAMI LEVEL
3

neck style options:



or



or



MICROPOROUS ISOLATION GOWN

These gowns are made from strong, breathable film, created with advanced technology to ensure exceptional performance against blood-borne pathogens. Ideal for use in environments with demanding liquid pressure conditions:

- Microporous non-woven laminate
- Side ties on waist
- Knitted cuffs or elastic band
- Hook and loop or sticky tab on neck
- Full back for complete protection
- Single-use
- **Model No: 8180**

ITEM NO.	SIZE	COLOR	PACKAGING
Hook and loop neck, knitted cuffs, flat pack			
8180V1TE2LG	L	White	10/bag, 100/case
8180V1TE2XL	XL	White	10/bag, 100/case
8180V1TE22X	XXL	White	10/bag, 100/case
8180V1TE1LG	L	Blue	10/bag, 100/case
8180V1TE1XL	XL	Blue	10/bag, 100/case
8180V1TE12X	XXL	Blue	10/bag, 100/case
Neck ties, knitted cuffs, flat pack			
8180V2TE2LG	L	White	10/bag, 100/case
8180V2TE2XL	XL	White	10/bag, 100/case
8180V2TE22X	XXL	White	10/bag, 100/case
8180V2TE1LG	L	Blue	10/bag, 100/case
8180V2TE1XL	XL	Blue	10/bag, 100/case
8180V2TE12X	XXL	Blue	10/bag, 100/case



AAMI LEVEL
3

neck style
options:



or



OVER-THE-HEAD VISITOR’S GOWN

These gowns provide minimal fluid protection and a comfortable construction that makes them easy to wear and to remove:

- Spunbond polypropylene
- Breathable and comfortable
- Waist ties
- Elastic thumb loop cuffs
- Over-the-head design makes it easy to don and doff
- Open back
- Single-use
- **Model No: 8040**



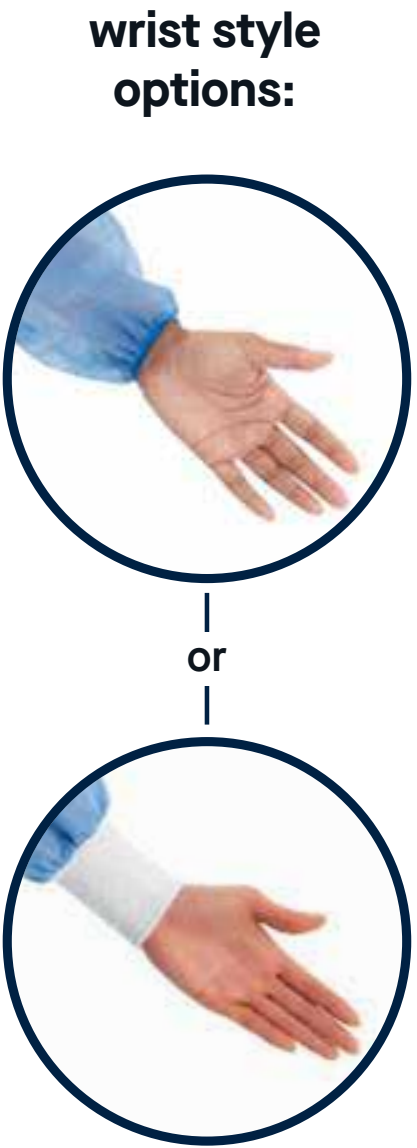
ITEM NO.	SIZE	COLOR	PACKAGING
Over-the-head, elastic thumb loop, flat pack			
8040V1TE1LG	L	Blue	10/bag, 120/case
8040V1TE1XL	XL	Blue	10/bag, 120/case
8040V1TE3LG	L	Yellow	10/bag, 120/case
8040V1TE3XL	XL	Yellow	10/bag, 120/case

VISITOR’S GOWN

These comfortable gowns provide protection in environments where there is minimal fluid:

- Spunbond polypropylene
- Breathable and comfortable
- Waist and neck ties
- Elastic or knitted cuffs
- Full back for complete coverage
- Single-use
- **Model No: 8060**

ITEM NO.	SIZE	COLOR	PACKAGING
Medium weight, neck ties, elastic band, flat pack			
8060V3TE1LG	L	Blue	10/bag, 110/case
8060V3TE1XL	XL	Blue	10/bag, 110/case
8060V3TE12X	XXL	Blue	10/bag, 110/case
8060V3TE3LG	L	Yellow	10/bag, 110/case
8060V3TE3XL	XL	Yellow	10/bag, 110/case
8060V3TE32X	XXL	Yellow	10/bag, 110/case
Medium weight, neck ties, knitted cuffs, flat pack			
8060V4TE1LG	L	Blue	10/bag, 110/case
8060V4TE1XL	XL	Blue	10/bag, 110/case
8060V4TE12X	XXL	Blue	10/bag, 110/case

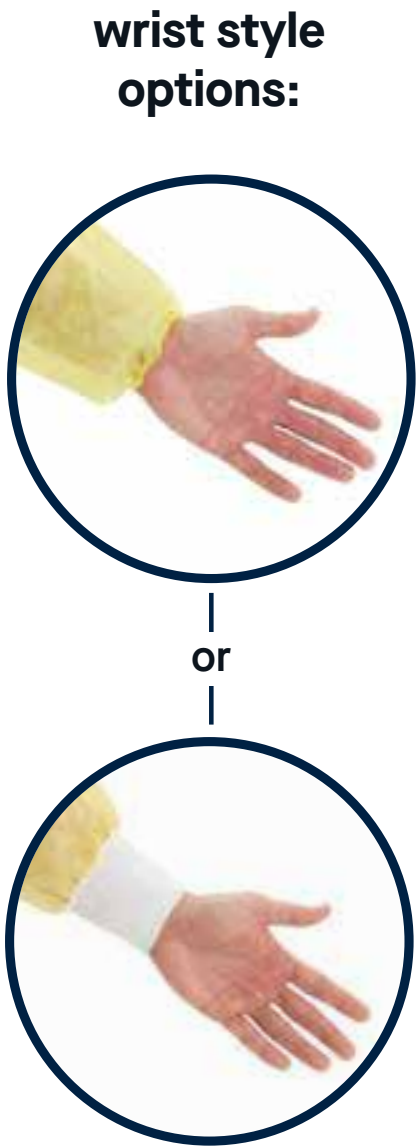


VISITOR’S GOWN

These comfortable gowns provide protection in environments where there is minimal fluid:

• Model No: 8060

ITEM NO.	SIZE	COLOR	PACKAGING
Lightweight, neck ties, elastic band, flat pack			
8060V1TE1MD	M	Blue	10/bag, 120/case
8060V1TE1LG	L	Blue	10/bag, 120/case
8060V1TE1XL	XL	Blue	10/bag, 120/case
8060V1TE12X	XXL	Blue	10/bag, 120/case
8060V1TE2MD	M	White	10/bag, 120/case
8060V1TE2LG	L	White	10/bag, 120/case
8060V1TE2XL	XL	White	10/bag, 120/case
8060V1TE22X	XXL	White	10/bag, 120/case
8060V1TE3MD	M	Yellow	10/bag, 120/case
8060V1TE3LG	L	Yellow	10/bag, 120/case
8060V1TE3XL	XL	Yellow	10/bag, 120/case
8060V1TE32X	XXL	Yellow	10/bag, 120/case
Lightweight, neck ties, knitted cuffs, flat pack			
8060V2TE1LG	L	Blue	10/bag, 120/case
8060V2TE1XL	XL	Blue	10/bag, 120/case
8060V2TE12X	XXL	Blue	10/bag, 120/case
8060V2TE3LG	L	Yellow	10/bag, 120/case
8060V2TE3XL	XL	Yellow	10/bag, 120/case
8060V2TE32X	XXL	Yellow	10/bag, 120/case



THUMP-LOOP POLYETHYLENE FILM GOWN

These gowns provide protection against fluid exposure. Ideal for hospital wards with risk of infection, Intensive Care Units and Emergency wards:

- Impervious low density polyethylene material
- Over-the-head design
- Ties on waist
- Thumb loops
- Full front protection
- Open back
- Available in blue
- **Model No: 8480**

Resistance to liquid penetration > 60 cm H2O.



ITEM NO.	SIZE	COLOR	PACKAGING
Medium weight, individually wrapped, dispenser box			
8480V1MP100	Universal	Blue	1/bag, 15/box, 75/case
8480V1MP1XL	XL	Blue	1/bag, 15/box, 75/case

Individually folded and wrapped in dispenser box.

OVER-THE-HEAD POLY-REINFORCED GOWN

These gowns provide reliable protection while being easy to wear and to remove:

- Polyethylene-coated multi-layer SMS
- Ties on waist
- Knitted cuffs or Elastic thumb loop cuffs
- Full front protection
- Open back
- Single-use
- **Model No: 8125**

Material is tested against viral penetration according to standard ASTM F1671.



wrist style options:



or



ITEM NO.	SIZE	COLOR	PACKAGING
Over-the-head, knitted cuffs, flat pack			
8125V1TE1LG	L	Blue	10/bag, 110/case
8125V1TE1XL	XL	Blue	10/bag, 110/case
8125V1TE12X	XXL	Blue	10/bag, 110/case
Over-the-head, elastic thumb loop, flat pack			
8125V2TE1LG	L	Blue	10/bag, 110/case
8125V2TE1XL	XL	Blue	10/bag, 110/case
8125V2TE12X	XXL	Blue	10/bag, 110/case

PROTECTIVE GOWN

These gowns provide protection against fluid and biological agent exposure:

- Microporous non-woven laminate
- Category III Personal Protective Equipment
- Side ties on waist
- Knitted cuffs
- Ties on neck
- Full back for complete protection
- Single-use
- **Model No: 8145**

Partial body protection according to EN ISO 13034 (Type PB [6]).
Tested for protection against biological agents EN 14126 (Type PB[6]-B).
Class 6 for resistance to blood and other bodily fluid-borne pathogens, Phi-X174 bacteriophage (ISO 16604 as per EN 14126).

ITEM NO.	SIZE	COLOR	PACKAGING
Neck ties, knitted cuffs, flat pack			
8145V1PI2SM	S	White	1/bag, 60/case
8145V1PI2MD	M	White	1/bag, 60/case
8145V1PI2LG	L	White	1/bag, 60/case
8145V1PI2XL	XL	White	1/bag, 60/case
8145V1PI22X	XXL	White	1/bag, 60/case
8145V1PI23X	3XL	White	1/bag, 60/case
8145V1PI24X	4XL	White	1/bag, 60/case
8145V1PI25X	5XL	White	1/bag, 60/case



SURGICAL GOWN

These gowns are designed for use in operating rooms. They offer reliable protection and a soft, comfortable feel:

- Medium-weight breathable multi-layer SMS fabric
- Low linting fabric
- Strong and durable
- 4 ties
- Knitted cuffs
- Adjustable hook and loop closure on neck
- Also available in sterile codes in single-layer packaging with overwrap and huck towels
- **Model No: 8105**

EN-13795-1 Standard Performance.
Conforms with ANSI/AAMI PB70 level 2 barrier protection for surgical apparel.
Meets Class I Normal Flammability as defined in CPSC 16 CFR Part 1610.

ITEM NO.	SIZE	COLOR	PACKAGING
Hook and loop neck, knitted cuffs, set-in sleeves			
8105V1TE1SS	S/M	Blue	10/bag, 100/case
8105V1TE1LG	L	Blue	10/bag, 100/case
8105V1TE1XL	XL	Blue	10/bag, 100/case
8105V1TE12X	XXL	Blue	10/bag, 100/case
Hook and loop neck, knitted cuffs, raglan sleeves			
8105V4TE1SS	S/M	Blue	10/bag, 100/case
8105V4TE1LG	L	Blue	10/bag, 100/case
8105V4TE1XL	XL	Blue	10/bag, 100/case
8105V4TE12X	XXL	Blue	10/bag, 100/case

Non-sterile codes



AAMI LEVEL

2

EN 13795-1 SP

IMPERVIOUS GOWN

This technologically-advanced gown is made with breathable membranes:

- Microporous non-woven laminate
- Low linting fabric
- Excellent fluid-resistance
- 4 ties
- Knitted cuffs
- Adjustable hook and loop closure on neck
- Also available in sterile codes in single-layer packaging with overwrap and huck towels
- **Model No: 8160**

EN 13795-1 Standard Performance.
Conforms with ANSI/AAMI PB70 level 3 barrier protection for surgical apparel.
Complies with EN 13034 (Type PB [6]) and EN 14126 standards (Type PB [6]-B).
Meets Class I Normal Flammability as defined in CPSC 16 CFR Part 1610.

ITEM NO.	SIZE	COLOR	PACKAGING
Hook and loop neck, knitted cuffs, set-in sleeves			
8160V1TE1SS	S/M	Blue	10/bag, 80/case
8160V1TE1LG	L	Blue	10/bag, 80/case
8160V1TE1XL	XL	Blue	10/bag, 80/case
8160V1TE12X	XXL	Blue	10/bag, 80/case
Hook and loop neck, knitted cuffs, raglan sleeves			
8160V4TE1SS	S/M	Blue	10/bag, 80/case
8160V4TE1LG	L	Blue	10/bag, 80/case
8160V4TE1XL	XL	Blue	10/bag, 80/case
8160V4TE12X	XXL	Blue	10/bag, 80/case

Non-sterile codes



AAMI LEVEL
3

EN 13795-1 SP

REINFORCED SURGICAL GOWN

These durable gowns are designed for demanding operating room environments. They offer reliable protection and a soft, comfortable feel:

- Breathable multi-layer SMS fabric with poly-reinforcement
- Low linting fabric
- Exceptional drapability
- 4 ties
- Knitted cuffs
- Adjustable hook and loop closure on neck
- Also available in sterile codes in single-layer packaging with overwrap and huck towels
- **Model No: 8140**

EN-13795-1 High Performance.
Conforms with ANSI/AAMI PB70 level 4 barrier protection for surgical apparel.
Meets Class I Normal Flammability as defined in CPSC 16 CFR Part 1610.

ITEM NO.	SIZE	COLOR	PACKAGING
Hook and loop neck, knitted cuffs, set-in sleeves			
8140V1TE1SS	S/M	Blue	10/bag, 90/case
8140V1TE1LG	L	Blue	10/bag, 90/case
8140V1TE1XL	XL	Blue	10/bag, 90/case
8140V1TE12X	XXL	Blue	10/bag, 90/case
Hook and loop neck, knitted cuffs, raglan sleeves			
8140V4TE1SS	S/M	Blue	10/bag, 90/case
8140V4TE1LG	L	Blue	10/bag, 90/case
8140V4TE1XL	XL	Blue	10/bag, 90/case
8140V4TE12X	XXL	Blue	10/bag, 90/case

Non-sterile codes



AAMI LEVEL

4

EN 13795-1 HP

POLY-REINFORCED SURGICAL GOWN

These gowns offer enhanced protection while remaining cost-effective:

- Polyethylene coated multi-layer SMS
- Breathable back
- Low linting fabric
- 4 ties
- Knitted cuffs
- Adjustable hook and loop closure on neck
- Also available in sterile codes in single-layer packaging with overwrap and huck towels
- **Model No: 8135**

EN-13795-1 High Performance.
Conforms with ANSI/AAMI PB70 level 4 barrier protection for surgical apparel.
Meets Class I Normal Flammability as defined in CPSC 16 CFR Part 1610.

ITEM NO.	SIZE	COLOR	PACKAGING
Hook and loop neck, knitted cuffs, set-in sleeves			
8135V1TE1SS	S/M	Blue	10/bag, 90/case
8135V1TE1LG	L	Blue	10/bag, 90/case
8135V1TE1XL	XL	Blue	10/bag, 90/case
8135V1TE12X	XXL	Blue	10/bag, 90/case
Hook and loop neck, knitted cuffs, raglan sleeves			
8135V4TE1SS	S/M	Blue	10/bag, 90/case
8135V4TE1LG	L	Blue	10/bag, 90/case
8135V4TE1XL	XL	Blue	10/bag, 90/case
8135V4TE12X	XXL	Blue	10/bag, 90/case

Non-sterile codes



AAMI LEVEL

4

EN 13795-1 HP

PERFORMANCE SURGICAL GOWN

These durable reinforced gowns are designed for demanding operating room environments. They offer reliable protection and a soft, comfortable feel:

- Protective reinforced sleeves
- Poly-reinforced SMS front
- Breathable SMS fabric on back
- Low linting fabric
- Strong and durable
- 4 ties
- Knitted cuffs
- Adjustable hook and loop closure on neck.
- Also available in sterile codes in single-layer packaging with overwrap and huck towels
- **Model No: 8230**

EN-13795-1 High Performance.
Conforms with ANSI/AAMI PB70 level 4 barrier protection for surgical apparel.
Meets Class I Normal Flammability as defined in CPSC 16 CFR Part 1610.

ITEM NO.	SIZE	COLOR	PACKAGING
Hook and loop neck, knitted cuffs, set-in sleeves			
8130V1TE1SS	S/M	Blue	10/bag, 100/case
8130V1TE1LG	L	Blue	10/bag, 100/case
8130V1TE1XL	XL	Blue	10/bag, 100/case
8130V1TE12X	XXL	Blue	10/bag, 100/case
Hook and loop neck, knitted cuffs, raglan sleeves			
8130V4TE1SS	S/M	Blue	10/bag, 100/case
8130V4TE1LG	L	Blue	10/bag, 100/case
8130V4TE1XL	XL	Blue	10/bag, 100/case
8130V4TE12X	XXL	Blue	10/bag, 100/case

Non-sterile codes



AAMI LEVEL

4

EN 13795-1 HP

BREATHATECH™ SURGICAL GOWN

These gowns are made from strong tri-laminate material that provides comfort and durability. They offer reliable protection and a soft, comfortable feel:

- Breathable film laminate between two layers of multi-layer SMS
- Protective reinforced sleeves
- Low linting fabric
- 4 ties
- Knitted cuffs
- Adjustable hook and loop closure on neck
- Also available in sterile codes in single-layer packaging with overwrap and huck towels
- Full back for complete protection
- **Model No: 8220**

EN-13795-1 High Performance.
Conforms with ANSI/AAMI PB70 level 4 barrier protection for surgical apparel.
Meets Class I Normal Flammability as defined in CPSC 16 CFR Part 1610.

ITEM NO.	SIZE	COLOR	PACKAGING
Hook and loop neck, knitted cuffs, set-in sleeves			
8220V1TE1SS	S/M	Blue	10/bag, 80/case
8220V1TE1LG	L	Blue	10/bag, 80/case
8220V1TE1XL	XL	Blue	10/bag, 80/case
8220V1TE12X	XXL	Blue	10/bag, 80/case
Hook and loop neck, knitted cuffs, raglan sleeves			
8220V4TE1SS	S/M	Blue	10/bag, 80/case
8220V4TE1LG	L	Blue	10/bag, 80/case
8220V4TE1XL	XL	Blue	10/bag, 80/case
8220V4TE12X	XXL	Blue	10/bag, 80/case

Non-sterile codes



AAMI LEVEL

4

EN 13795-1 HP

SPUNBOND LAB COAT

- Spunbond polypropylene
- Breathable and comfortable
- No front pockets
- Traditional or knitted collar
- Elasticated cuffs
- Snap closures
- Cost-effective
- **Model No: 8750**

ITEM NO.	SIZE	COLOR	PACKAGING
Front velcro closure, traditional collar, elasticated cuffs			
8750V1TE2SM	S	White	10/bag, 80/case
8750V1TE2MD	M	White	10/bag, 80/case
8750V1TE2LG	L	White	10/bag, 80/case
8750V1TE2XL	XL	White	10/bag, 80/case
8750V1TE22X	XXL	White	10/bag, 80/case
8750V1TE1SM	S	Blue	10/bag, 80/case
8750V1TE1MD	M	Blue	10/bag, 80/case
8750V1TE1LG	L	Blue	10/bag, 80/case
8750V1TE1XL	XL	Blue	10/bag, 80/case
8750V1TE12X	XXL	Blue	10/bag, 80/case



BASIC PROTECTION LAB COAT

- Spunbond polypropylene
- Breathable and comfortable
- 3 convenient front pockets
- Traditional or knitted collar
- Elasticated cuffs
- Snap closures
- **Model No: 8700**

ITEM NO.	SIZE	COLOR	PACKAGING
Front snap closure, traditional collar, elasticated cuffs			
8700V1TE2SM	S	White	10/bag, 80/case
8700V1TE2MD	M	White	10/bag, 80/case
8700V1TE2LG	L	White	10/bag, 80/case
8700V1TE2XL	XL	White	10/bag, 80/case
8700V1TE22X	XXL	White	10/bag, 80/case
Front snap closure, knitted collar, elasticated cuffs			
8700V2TE2SM	S	White	10/bag, 80/case
8700V2TE2MD	M	White	10/bag, 80/case
8700V2TE2LG	L	White	10/bag, 80/case
8700V2TE2XL	XL	White	10/bag, 80/case
8700V2TE22X	XXL	White	10/bag, 80/case



TRI-LAYER
LAB COAT

- Protective multi-layer SMS fabric
- Strong and durable
- 3 convenient front pockets
- Traditional or knitted collar
- Knitted cuffs
- Snap closures
- **Model No: 8720**

Material meets AAMI/PB70 Level 2 requirements for impact penetration and hydrostatic pressure.

ITEM NO.	SIZE	COLOR	PACKAGING
Front snap closure, traditional collar, knitted cuffs			
8720V1TE1SM	S	Blue	10/bag, 80/case
8720V1TE1MD	M	Blue	10/bag, 80/case
8720V1TE1LG	L	Blue	10/bag, 80/case
8720V1TE1XL	XL	Blue	10/bag, 80/case
8720V1TE12X	XXL	Blue	10/bag, 80/case
Front snap closure, knitted collar, knitted cuffs			
8720V2TE1SM	S	Blue	10/bag, 80/case
8720V2TE1MD	M	Blue	10/bag, 80/case
8720V2TE1LG	L	Blue	10/bag, 80/case
8720V2TE1XL	XL	Blue	10/bag, 80/case
8720V2TE12X	XXL	Blue	10/bag, 80/case



PROTECTIVE
LAB COAT

- Microporous non-woven laminate
- Category III Personal Protective Equipment
- Excellent protection against fluids and biological agents
- No front pockets
- Mandarin collar
- Elasticated cuffs (Tunnelled)
- Snap closures
- **Model No: 9540**

Partial body protection according to EN ISO 13034 (Type PB[6]).
Tested for protection against biological agents EN 14126 (Type PB[6]-B).
Class 6 for resistance to blood and other bodily fluid-borne pathogens, Phi-X174 bacteriophage (ISO 16604 as per EN 14126).

ITEM NO.	SIZE	COLOR	PACKAGING
Front snap closure, mandarin collar, elastic band			
9540V1PI2SM	S	White	1/bag, 60/case
9540V1PI2MD	M	White	1/bag, 60/case
9540V1PI2LG	L	White	1/bag, 60/case
9540V1PI2XL	XL	White	1/bag, 60/case
9540V1PI22X	XXL	White	1/bag, 60/case
9540V1PI23X	3XL	White	1/bag, 60/case
9540V1PI24X	4XL	White	1/bag, 60/case



BASIC PROTECTION COVERALL

- Spunbond polypropylene
- Breathable and comfortable
- Storm flap closure for increased protection
- Front zip
- Traditional collar
- **Model No: 9000TC, 9000SW**

ITEM NO.	SIZE	COLOR	PACKAGING
Model No: 9000TC, Traditional collar, Elastic wrists and ankles			
9000TCV1PI2SM	S	White	1/bag, 50/case
9000TCV1PI2MD	M	White	1/bag, 50/case
9000TCV1PI2LG	L	White	1/bag, 50/case
9000TCV1PI2XL	XL	White	1/bag, 50/case
9000TCV1PI22X	XXL	White	1/bag, 50/case
9000TCV1PI23X	3XL	White	1/bag, 50/case
9000TCV1PI24X	4XL	White	1/bag, 50/case
9000TCV1PI25X	5XL	White	1/bag, 50/case
Model No: 9000SW, Traditional collar, Straight wrists and ankles			
9000SWV1PI2SM	S	White	1/bag, 50/case
9000SWV1PI2MD	M	White	1/bag, 50/case
9000SWV1PI2LG	L	White	1/bag, 50/case
9000SWV1PI2XL	XL	White	1/bag, 50/case
9000SWV1PI22X	XXL	White	1/bag, 50/case
9000SWV1PI23X	3XL	White	1/bag, 50/case
9000SWV1PI24X	4XL	White	1/bag, 50/case
9000SWV1PI25X	5XL	White	1/bag, 50/case



PROTECTIVE COVERALL

- Protective multi-layer SMS fabric
- Strong and durable
- Storm flap closure for increased protection
- Front zip
- Traditional collar
- **Model No: 9400TC, 9400SW**

ITEM NO.	SIZE	COLOR	PACKAGING
Model No: 9400TC, Traditional collar, Elastic wrists and ankles			
9400TCV1PI1SM	S	Blue	1/bag, 40/case
9400TCV1PI1MD	M	Blue	1/bag, 40/case
9400TCV1PI1LG	L	Blue	1/bag, 40/case
9400TCV1PI1XL	XL	Blue	1/bag, 40/case
9400TCV1PI12X	XXL	Blue	1/bag, 40/case
9400TCV1PI13X	3XL	Blue	1/bag, 40/case
9400TCV1PI14X	4XL	Blue	1/bag, 40/case
9400TCV1PI15X	5XL	Blue	1/bag, 40/case
Model No: 9400SW, Traditional collar, Straight wrists and ankles			
9400SWV1PI1SM	S	Blue	1/bag, 40/case
9400SWV1PI1MD	M	Blue	1/bag, 40/case
9400SWV1PI1LG	L	Blue	1/bag, 40/case
9400SWV1PI1XL	XL	Blue	1/bag, 40/case
9400SWV1PI12X	XXL	Blue	1/bag, 40/case
9400SWV1PI13X	3XL	Blue	1/bag, 40/case
9400SWV1PI14X	4XL	Blue	1/bag, 40/case
9400SWV1PI15X	5XL	Blue	1/bag, 40/case



TRI-LAYER SCRUB SUIT

- Manufactured from breathable SMS material
- Optimal opacity and softness
- Designed for healthcare professionals
- Low linting fabric
- Non-biological fluid resistance
- Available in blue, green and purple
- 3 front pockets on top
- Unisex fit
- **Model No: 6300C (Scrub suit), 6300 (Scrub pants), 6400 (Scrub top)**

SIZE	BLUE SCRUB SUIT	UNIT PER CASE
S	6300CV1MP1SM	25
M	6300CV1MP1MD	25
L	6300CV1MP1LG	25
XL	6300CV1MP1XL	25
XXL	6300CV1MP12X	25
3XL	6300CV1MP13X	25
4XL	6300CV1MP14X	25

SIZE	BLUE SRUB PANTS	UNIT PER CASE
S	6300V1PI1SM	50
M	6300V1PI1MD	50
L	6300V1PI1LG	50
XL	6300V1PI1XL	50
XXL	6300V1PI12X	50
3XL	6300V1PI13X	50
4XL	6300V1PI14X	50

SIZE	BLUE SRUB TOP	UNIT PER CASE
S	6400V1PI1SM	50
M	6400V1PI1MD	50
L	6400V1PI1LG	50
XL	6400V1PI1XL	50
XXL	6400V1PI12X	50
3XL	6400V1PI13X	50
4XL	6400V1PI14X	50



TRI-LAYER
WARM-UP JACKETS

- Manufactured from breathable SMS material
- Optimal opacity and softness
- Designed to be worn in operating rooms and cooler hospital spaces
- Designed for healthcare professionals
- Low linting fabric
- Non-biological fluid resistance
- Latex-free
- 5 front snap closures
- Knitted cuffs
- Knitted collar
- 3 front pockets
- **Model No: 6800**

SIZE	BLUE WARM-UP JACKETS	UNIT PER CASE
S	6800V1PI1SM	40
M	6800V1PI1MD	40
L	6800V1PI1LG	40
XL	6800V1PI1XL	40
XXL	6800V1PI12X	40
3XL	6800V1PI13X	40
4XL	6800V1PI14X	40



COMFORT SCRUB SUIT

- Manufactured from breathable Spunbond polypropylene material
- Optimal opacity and softness
- Designed for healthcare professionals
- Minimal fluid resistance
- Available in blue, green and purple
- 3 front pockets on top
- 2 back pockets on trousers
- **Model No: 6600C (Scrub suit), 6600 (Scrub pants), 6700 (Scrub top)**

SIZE	BLUE SCRUB SUIT	UNIT PER CASE
S	6600CV1MP1SM	25
M	6600CV1MP1MD	25
L	6600CV1MP1LG	25
XL	6600CV1MP1XL	25
XXL	6600CV1MP12X	25
3XL	6600CV1MP13X	25
4XL	6600CV1MP14X	25

SIZE	BLUE SRUB PANTS	UNIT PER CASE
S	6600V1PI1SM	50
M	6600V1PI1MD	50
L	6600V1PI1LG	50
XL	6600V1PI1XL	50
XXL	6600V1PI12X	50
3XL	6600V1PI13X	50
4XL	6600V1PI14X	50

SIZE	BLUE SRUB TOP	UNIT PER CASE
S	6700V1PI1SM	50
M	6700V1PI1MD	50
L	6700V1PI1LG	50
XL	6700V1PI1XL	50
XXL	6700V1PI12X	50
3XL	6700V1PI13X	50
4XL	6700V1PI14X	50



COMFORT
WARM-UP JACKETS

- Manufactured from breathable Spunbond polypropylene material
- Optimal opacity and softness
- Designed for healthcare professionals
- 5 front snap closures
- Knit cuffs
- Knit collar
- 3 front pocket
- **Model No: 6500**

SIZE	BLUE WARM-UP JACKETS	UNIT PER CASE
S	6500V1PI1SM	40
M	6500V1PI1MD	40
L	6500V1PI1LG	40
XL	6500V1PI1XL	40
XXL	6500V1PI12X	40
3XL	6500V1PI13X	40
4XL	6500V1PI14X	40



SLEEVELESS
PATIENT GOWN

- Manufactured from a breathable SMS material
- Optimal opacity and softness
- Comfortable during procedures
- Low linting fabric
- **Model No: 8800**

ITEM NO.	SIZE	COLOR	PACKAGING
8800V1TE1SM	S	Blue	10/bag, 100/case
8800V1TE1MD	M	Blue	10/bag, 100/case
8800V1TE1LG	L	Blue	10/bag, 100/case
8800V1TE1XL	XL	Blue	10/bag, 100/case
8800V1TE12X	XXL	Blue	10/bag, 100/case
8800V1TE13X	3XL	Blue	10/bag, 100/case
8800V1TE14X	4XL	Blue	10/bag, 100/case
8800V1TEASM	S	Navy Blue	10/bag, 100/case
8800V1TEAMD	M	Navy Blue	10/bag, 100/case
8800V1TEALG	L	Navy Blue	10/bag, 100/case
8800V1TEAXL	XL	Navy Blue	10/bag, 100/case
8800V1TEA2X	XXL	Navy Blue	10/bag, 100/case
8800V1TEA3X	3XL	Navy Blue	10/bag, 100/case
8800V1TEA4X	4XL	Navy Blue	10/bag, 100/case



SHORT SLEEVE
PATIENT GOWN

- Manufactured from breathable SMS material
- Optimal opacity and softness
- Comfortable during procedures
- Low linting fabric
- **Model No: 8820**

ITEM NO.	SIZE	COLOR	PACKAGING
8820V1TE1SM	S	Blue	10/bag, 100/case
8820V1TE1MD	M	Blue	10/bag, 100/case
8820V1TE1LG	L	Blue	10/bag, 100/case
8820V1TE1XL	XL	Blue	10/bag, 100/case
8820V1TE12X	XXL	Blue	10/bag, 100/case
8820V1TE13X	3XL	Blue	10/bag, 100/case
8820V1TE14X	4XL	Blue	10/bag, 100/case
8820V1TEASM	S	Navy Blue	10/bag, 100/case
8820V1TEAMD	M	Navy Blue	10/bag, 100/case
8820V1TEALG	L	Navy Blue	10/bag, 100/case
8820V1TEAXL	XL	Navy Blue	10/bag, 100/case
8820V1TEA2X	XXL	Navy Blue	10/bag, 100/case
8820V1TEA3X	3XL	Navy Blue	10/bag, 100/case
8820V1TEA4X	4XL	Navy Blue	10/bag, 100/case





Facial Protection

PROCEDURE MASK

- Spunbond polypropylene exterior and lining
- Type I Protection
- Comfortable ear loops
- **Model No: 1900**

ITEM NO.	BACTERIAL FILTRATION EFFICIENCY (%)	DIFFERENTIAL PRESSURE (Pa/cm²)	COLOR	PACKAGING
1900V1MP100	≥ 95	< 40	Blue	50/box, 600/case
1900V1MP200	≥ 95	< 40	White	50/box, 600/case
1900V1MP300	≥ 95	< 40	Yellow	50/box, 600/case
1900V1MP600	≥ 95	< 40	Pink	50/box, 600/case



TYPE
I

PROCEDURE MASK

- Spunbond polypropylene exterior and lining
- Type II Protection
- Comfortable ear loops
- **Model No: 2000**

ITEM NO.	BACTERIAL FILTRATION EFFICIENCY (%)	DIFFERENTIAL PRESSURE (Pa/cm²)	COLOR	PACKAGING
2000V1MP100	≥ 98	< 40	Blue	50/box, 600/case
2000V1MP200	≥ 98	< 40	White	50/box, 600/case
2000V1MP300	≥ 98	< 40	Yellow	50/box, 600/case
2000V1MP600	≥ 98	< 40	Pink	50/box, 600/case



TYPE
II

FLUID-PROTECTION PROCEDURE MASK

- Spunbond polypropylene exterior and lining
- Type IIR Protection
- Proven fluid-resistance
- Comfortable ear loops
- **Model No: 2100**

ITEM NO.	BACTERIAL FILTRATION EFFICIENCY (%)	DIFFERENTIAL PRESSURE (Pa/cm²)	COLOR	PACKAGING
2100V1MP100	≥ 98	< 60	Blue	50/box, 600/case
2100V1MP200	≥ 98	< 60	White	50/box, 600/case
2100V1MP300	≥ 98	< 60	Yellow	50/box, 600/case
2100V1MP600	≥ 98	< 60	Pink	50/box, 600/case



TYPE
IIR

Proper Donning and Doffing of Gowns

DONNING



- 1. First, pull the gown over the head (if it is an over-the-head gown).
- 2. Place arms into sleeves, hands through the cuffs and thumbs into their designated loops.
- 3. Pull the front and back down so you are completely covered from the neck to the knees. The arms should be completely covered to the wrists and the gown should be wrapped around the back.
- 4. Securely fasten the side ties.

* This gown should offer full coverage at the front and back.

DOFFING



- 1. Remove the gown by inserting your thumbs between the ties and gown, then pull the ties forward to break them.
- 2. With both hands, grab the front waist of the gown and pull it forward away from your body.
- 3. Pull the gown away from the shoulders and roll it down the body, inside out. Make sure to keep any fluids or contaminants inside the gown as you roll it into a ball.
- 4. Peel off gloves one at a time, making sure to only touch the insides of the gloves and gown with your bare hands.

* Gowns should be disposed of according to your facility's PPE requirements.

Bodyguard Branding and Packaging



UNIFIED BRANDING, SAME RELIABLE PROTECTION

Bodyguard packaging has been designed to make the identification of our products easier for healthcare workers. All Bodyguard AAMI-rated gowns are labelled with their relevant AAMI protection level in the associated colour. The numbers on the packaging clearly indicate the garment’s level of protection.

All packaging has been created in line with standards as per FDA requirements and ISO 15223-1 in compliance with the EU Medical Devices Directive, as well as being compliant with global regulatory labelling standards.

Each packaging item has its own unique barcode (EAN code). This enables easy scanning of labels and helps to simplify stock management.

TRACEABILITY IS OUR PRIORITY

The Bodyguard LOT tracing system allows us to trace every item’s origin. GS1-128 traceability barcodes are used where required in accordance with the 93/42 EEC Medical Devices Directive (EU). Bodyguard medical devices are traced by UDI barcoding to comply with strict FDA requirements.

SECONDARY PACKAGING IDENTIFICATION

Our secondary packaging system includes essential product information to assist with the easy identification of products in storage or during transportation.



ANSI/AAMI PB70 Guidelines

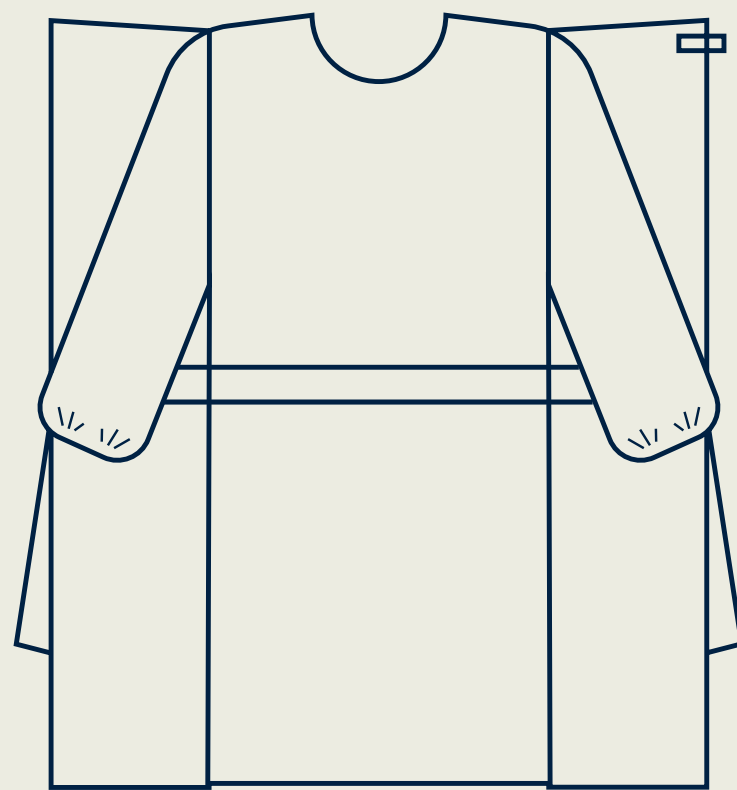
THE ASSOCIATION FOR THE ADVANCEMENT OF MEDICAL INSTRUMENTATION (AAMI)

ANSI/AAMI PB70 BARRIER PERFORMANCE	TEST METHOD	TEST DEFINITION	REQUIREMENT
AAMI LEVEL 1	AATCC 42 Impact Penetration	AATCC 42 Measures the resistance of fabrics to the liquid penetration of water by impact.	Spray Impact Impact Penetration ≤ 4.5g
AAMI LEVEL 2	AATCC 42 Impact Penetration AATCC 127 Hydrostatic Pressure	AATCC 42 Measures the resistance of fabrics to the liquid penetration of water by impact. AATCC 127 Measures the resistance of fabrics to the liquid penetration of water by impact under constant and increasing hydrostatic pressure.	Spray Impact Impact Penetration ≤ 1.0g Hydrostatic Pressure ≥ 20cm H2O
AAMI LEVEL 3	AATCC 42 Impact Penetration AATCC 127 Hydrostatic Pressure	AATCC 42 Measures the resistance of fabrics to the liquid penetration of water by impact. AATCC 127 Measures the resistance of fabrics to the liquid penetration of water by impact under constant and increasing hydrostatic pressure.	Spray Impact Impact Penetration ≤ 1.0g Hydrostatic Pressure ≥ 50cm H2O
AAMI LEVEL 4	ASTM F1671 Standard Test Method for Resistance of Materials Used in Protective Clothing to Penetration by Blood-Borne Pathogens Using Phi-X174 Bacteriophage Penetration as a Test System	ASTM F1671 Measures the resistance of fabrics to bloodborne pathogens using viral penetration at 2 psi and ambient pressure.	PASS

Association for the Advancement of Medical Instrumentation. **Liquid Barrier Performance and Classification of Protective Apparel and Drapes Intended for use in Health Care Facilities.** ANSI/AAMI PB70:2012. Arlington, VA:AAMI.

CRITICAL ZONES FOR ISOLATION GOWNS

The entire gown is a Critical Zone including seams and point of attachments, but excluding cuffs, hems and binding. AAMI also requires a closed back for isolation precautions.



FLUID PROTECTION

Designed to protect healthcare workers and patients, PPE prevents the contact transfer of pathogens such as MRSA and C. difficile. The Bodyguard range of AAMI-compliant isolation gowns offers excellent protection from liquid strikethrough, limiting these types of contamination.

FLAMMABILITY STANDARDS

These standards have been set out by the Consumer Product Safety Commission (16 CFR Part 1610, formerly CS 191-53). Bodyguard gowns meet flammability standards for disposable surgical drapes and gowns.

Bodyguard gowns are crafted from base materials that meet Class 1: Normal Flammability standards. It is necessary for a product to pass this standard before it can be made available for consumer use.

Note: Direct heat and ignition sources should not be placed against Bodyguard gowns.

AAMI GUIDELINE

The AAMI guidelines offer minimum requirements for effective protection, including:

- Strength, barrier protection and fluid resistance
- A 4% Acceptable Quality Limit (AQL) when tested in controlled conditions
- A fully protective body including the front, back and seams
- The level of provided protection should be clearly indicated by its label, i.e. AAMI Level 1 (lowest) to AAMI Level 4 (highest level of protection)

Bodyguard Multi-Layer AAMI1, AAMI2, AAMI3 and AAMI4 Isolation Gowns meet all AAMI specifications for levels 1, 2, 3 and 4 protection, respectively.

EN 13795-1 Guidelines

EUROPEAN STANDARD FOR SURGICAL CLOTHING AND DRAPES

The European Standard EN 13795-1 is recognised by the EU and regulates the quality of surgical gowns and drapes, maintaining universal good practice. Based on a series of agreed test methods applied to surgical gown fabrics, it is the first standard created for manufacturers and users of all single-use and multiple-use products.

All Bodyguard surgical gowns meet and exceed the minimum proposed performance requirements listed in the EN 13795-1 guidelines.

BIOCOMPATIBILITY

The ISO 10993 standards set out requirements for biological evaluation, biocompatibility testing and toxicity levels of medical products.

All Bodyguard surgical gowns meet and exceed these requirements.

CRITICAL AND LESS CRITICAL AREAS FOR SURGICAL GOWNS

At Bodyguard, we define the Critical Area (A) as: The chest and the sleeves (from cuff to elbow) for gowns.



Guide to Other Standards

EUROPEAN STANDARD EN 14683 FOR MEDICAL FACE MASKS

Type I medical face masks are intended for patients and the general public, not for the use of healthcare professionals in operation rooms or other medical settings. These masks should only be used to reduce the risk of infection spread during epidemic or pandemic situations.

Bacterial Filtration Efficiency (BFE) Test

This assesses filtration ability against an aerosol containing bacteria. The test uses bacteria of 3.0 microns in size.

Differential Pressure (ΔP) Test

This test determines the breathability of masks, assessing the air flow from one side of the mask to the other.

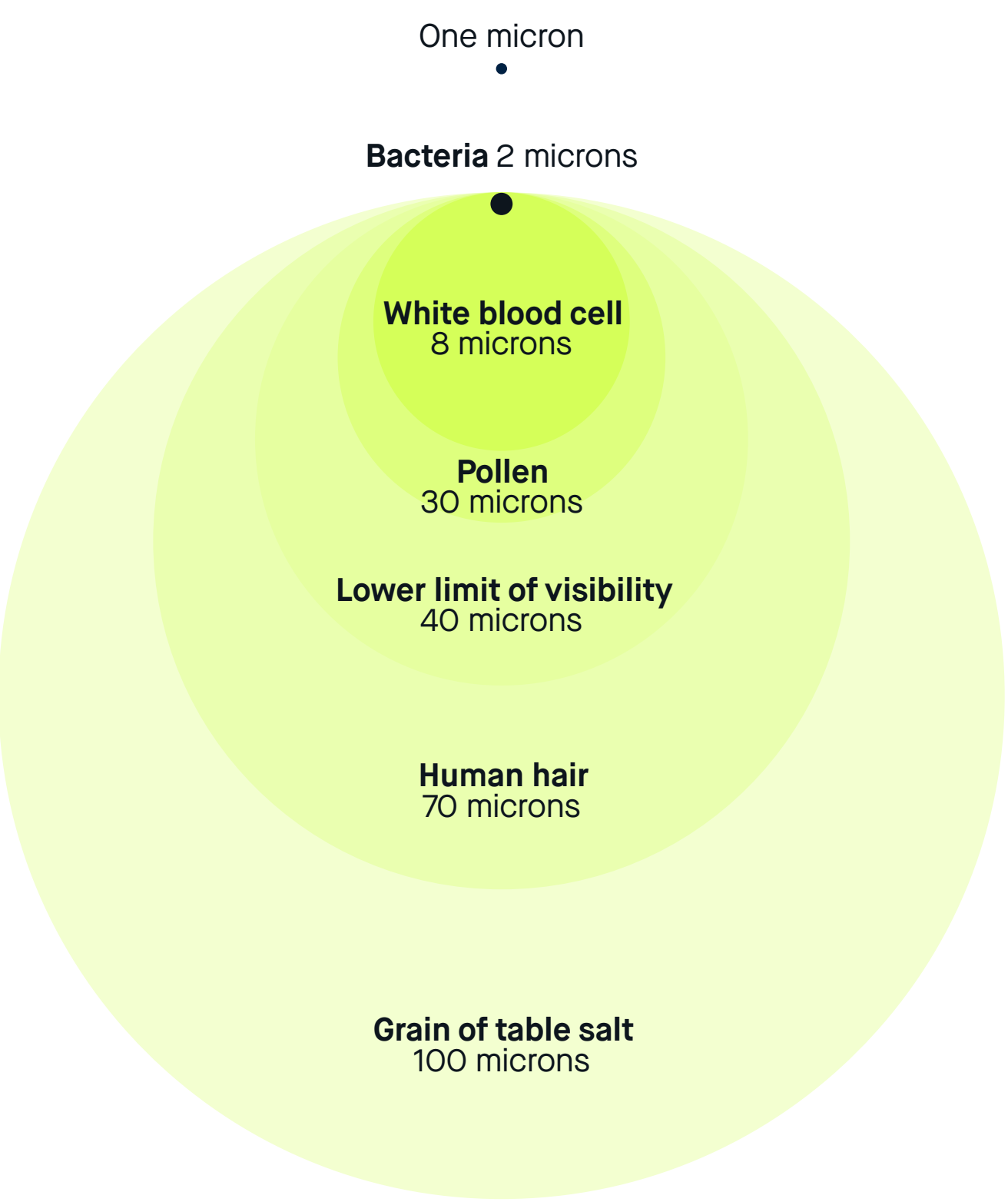
Splash Resistance Pressure Test

This test determines penetration resistance to synthetic blood at a single level: 16,0 kPa.

Microbial Cleanliness Test

This test determines the total number of viable microorganisms on the face mask.

HOW SMALL IS A MICRON ?



Scale is approximate.

TEST	TYPE I	TYPE II	TYPE IIR
Bacterial filtration efficiency, %	≥ 95	≥ 98	≥ 98
Differential pressure, Pa/cm²	< 40	< 40	< 60
Splash resistance pressure, kPa	Not required	Not required	≥ 16,0
Microbial cleanliness, cfu/g	≤ 30	≤ 30	≤ 30

EUROPEAN STANDARD EN 149 FOR RESPIRATORY MASK REQUIREMENTS

PHYSICAL PROPERTIES		FFP1	FFP2	FFP3
Bacterial filtration efficiency, %		Not more than 22% average	Not more than 8% average	Not more than 2% average
Penetration of filter material, maximum initial penetration of test aerosols	Sodium chloride test 95 l/min, % max.	20	6	1.0
	Paraffin oil test 95l/min, % max.	20	6	1.0
Breathing resistance, maximum permitted resistance (mbar)	Inhalation 30 l/min.	0.6	0.7	1.0
	Inhalation 95 l/min.	2.1	2.4	3.0
	Inhalation 160 l/min.	3	3	3.0

Bodygard respirator range is compliant with European standard EN149+A1:2009 for filtering half masks as respiratory protective devices to protect against particles. The range consists of cone-shaped and flat-shaped masks, with or without a valve, that fall under one of the performance classes specified by the standard: FFP2 or FFP3.

FFP1

FFP1 respirators have a filtering efficiency of at least 80%. They filter up to four times the respective occupational exposure limit (OEL*). These masks are not suitable for use in environments where there are toxic or fibrogenic particles.

FFP2

FFP2 respirators have a filtering efficiency of at least 94% and can be used at up to ten times the respective occupational exposure limit (OEL*). These masks are suitable for use in environments where there is noxious smoke, dust and other harmful particles.

FFP3

FFP3 respirators have a filtering efficiency of at least 99%, putting them in the highest class of protection. They filter up to 30 times the respective occupational exposure limit (OEL*). These masks are suitable for protection against toxic particles, dusts and smoke.

Contact Us

For more information, please contact your Bodyguard Customer Care Team: info@bodygard.com.tr

TURKEY

Organize Sanayi Bölgesi 26.
Cad. No:9 Eskişehir/Türkiye

T: +90 222 236 23 63

info@bodygard.com.tr

www.bodygard.com.tr

BODYGUARD